

Safety Information

- Refer to the Board of Cosmetology “Sanitary Rules and Regulations” posted in the school
- Safety and First Aid
 - Find the product ingredient information
 - Understand the ingredients
 - Refer to Material Safety Data Sheets (MSD Sheets) on what to do in an emergency.



Fire Safety

- In Event of fire:
 - Notify School Official of fire location
 - Call fire department when asked
 - Evacuate premises
 - Plan alternative exits
 - Service extinguishers

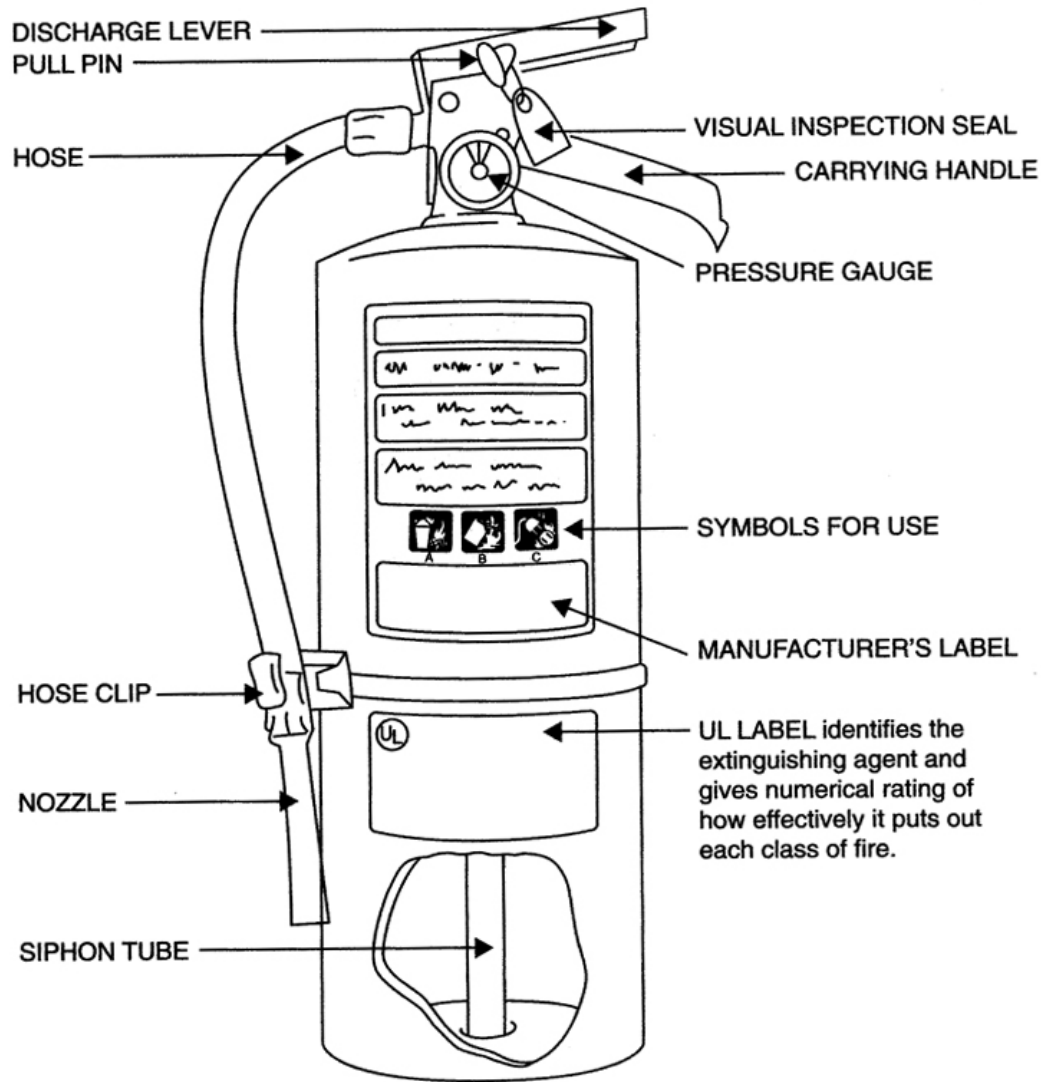


Fire Extinguisher Usage

- P – A – S – S
 - Pull the pin
 - Aim the nozzle
 - Squeeze the handle
 - Sweep from side to side



Operation of Fire Extinguishers





Fire & Tornado Drills

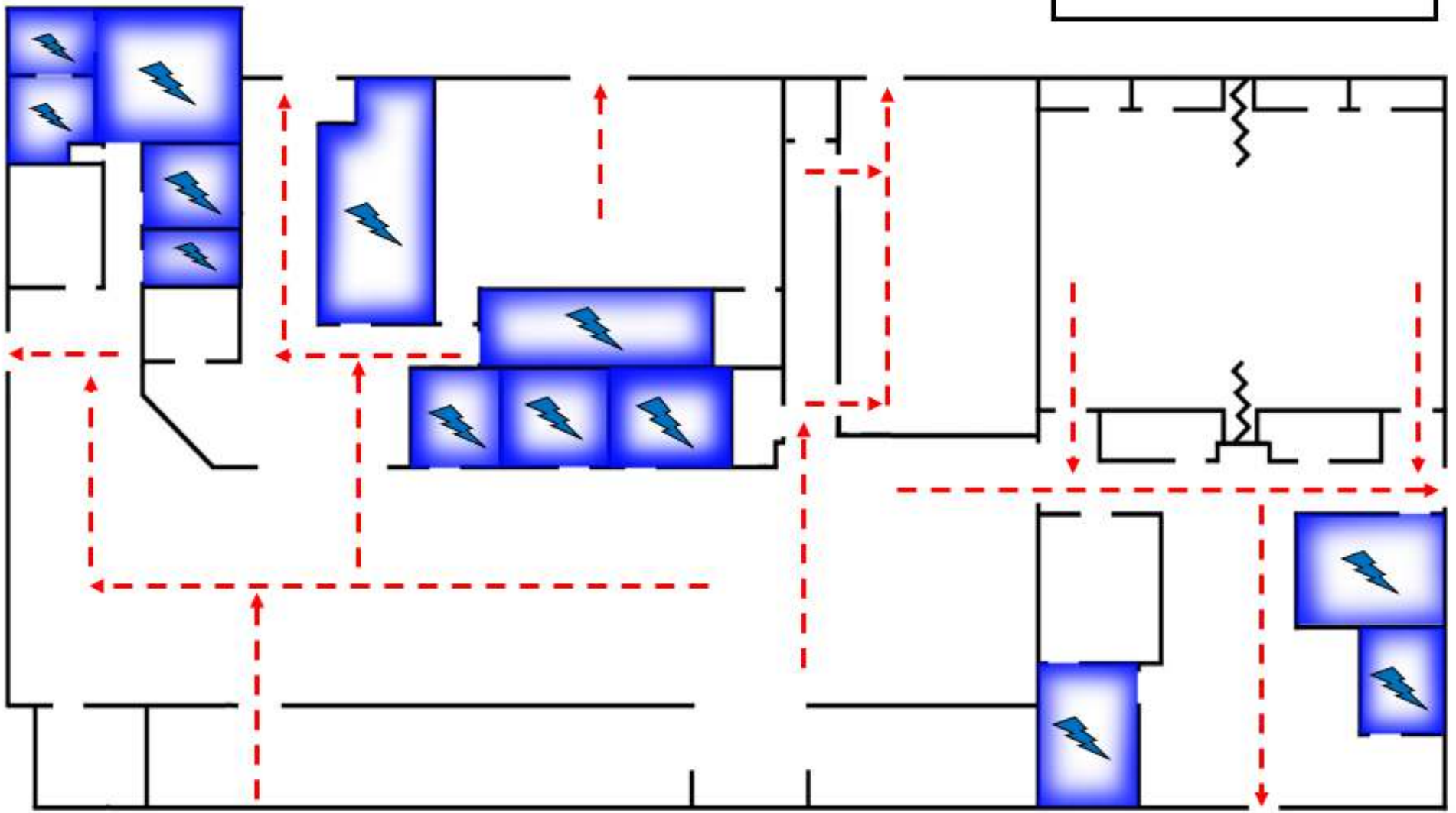
- Kenneth Shuler's Schools hold fire and tornado drills annually
- Check with your school's Director on proper evacuation routes and procedures



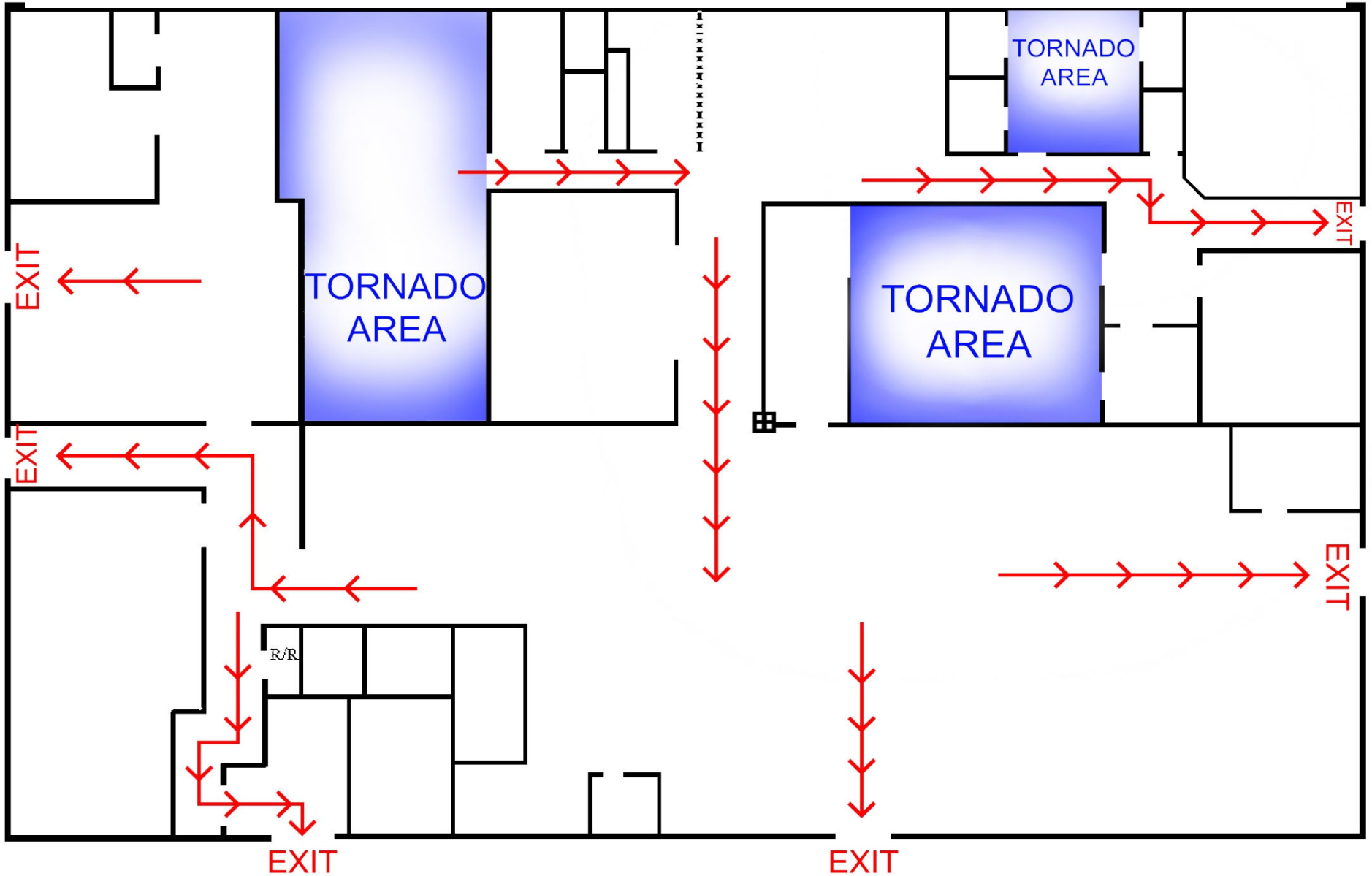
EVACUATION PLAN – St. ANDREWS CAMPUS

KEY

-  = Fire Route
-  = Tornado Area

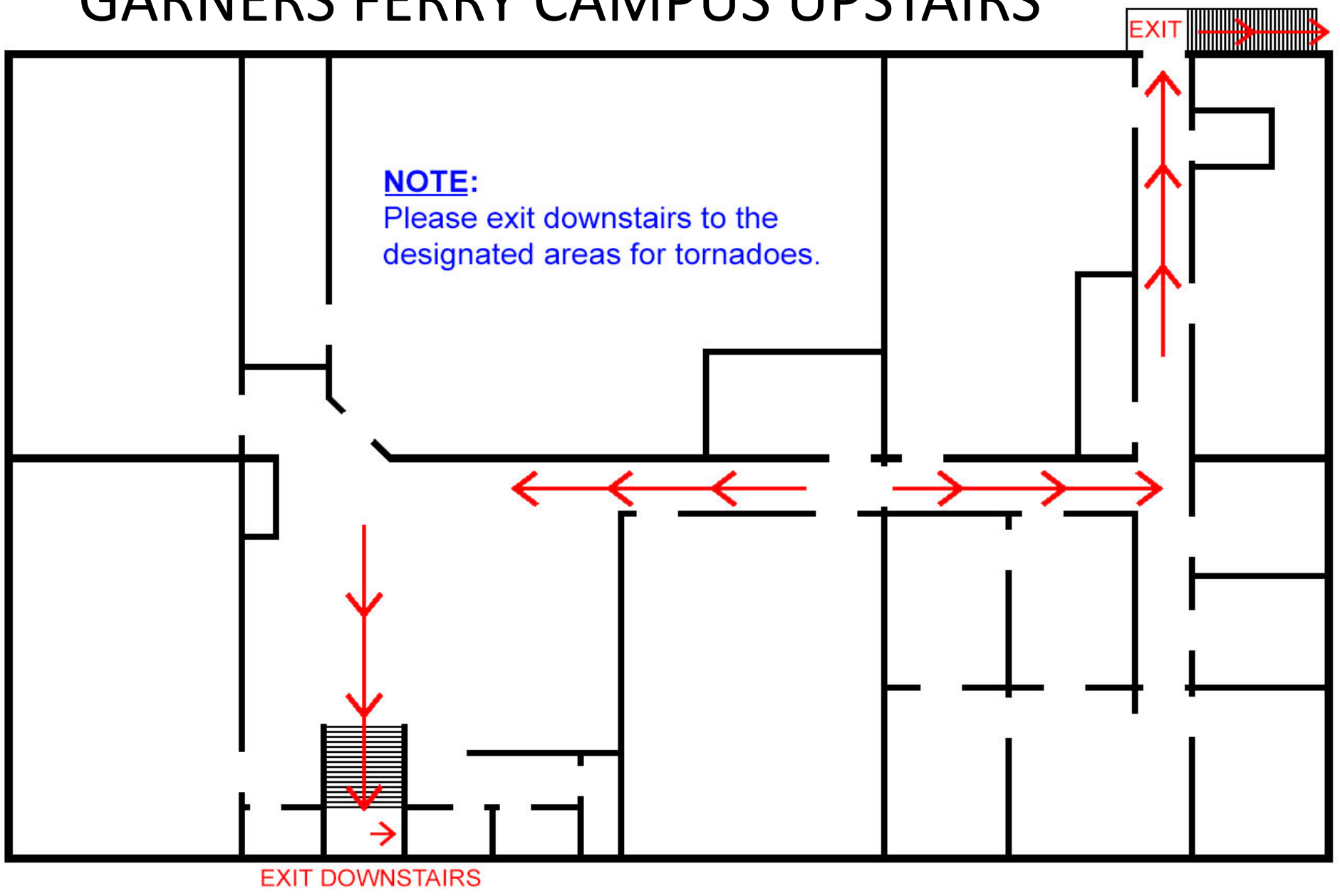


EVACUATION PLAN – GARNERS FERRY CAMPUS DOWNSTAIRS




EVACUATION PLAN – GARNERS FERRY CAMPUS UPSTAIRS

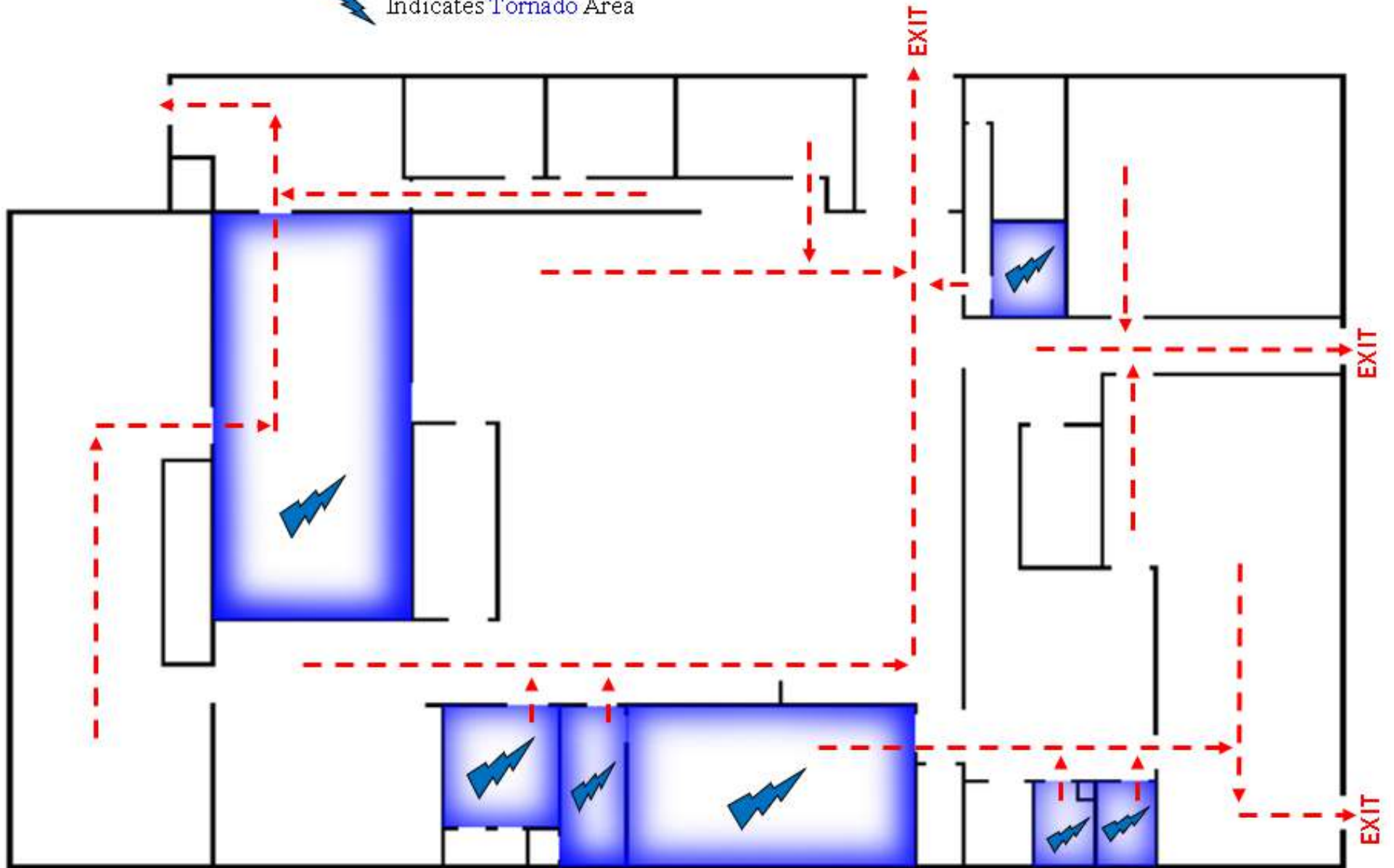
NOTE:
Please exit downstairs to the
designated areas for tornadoes.



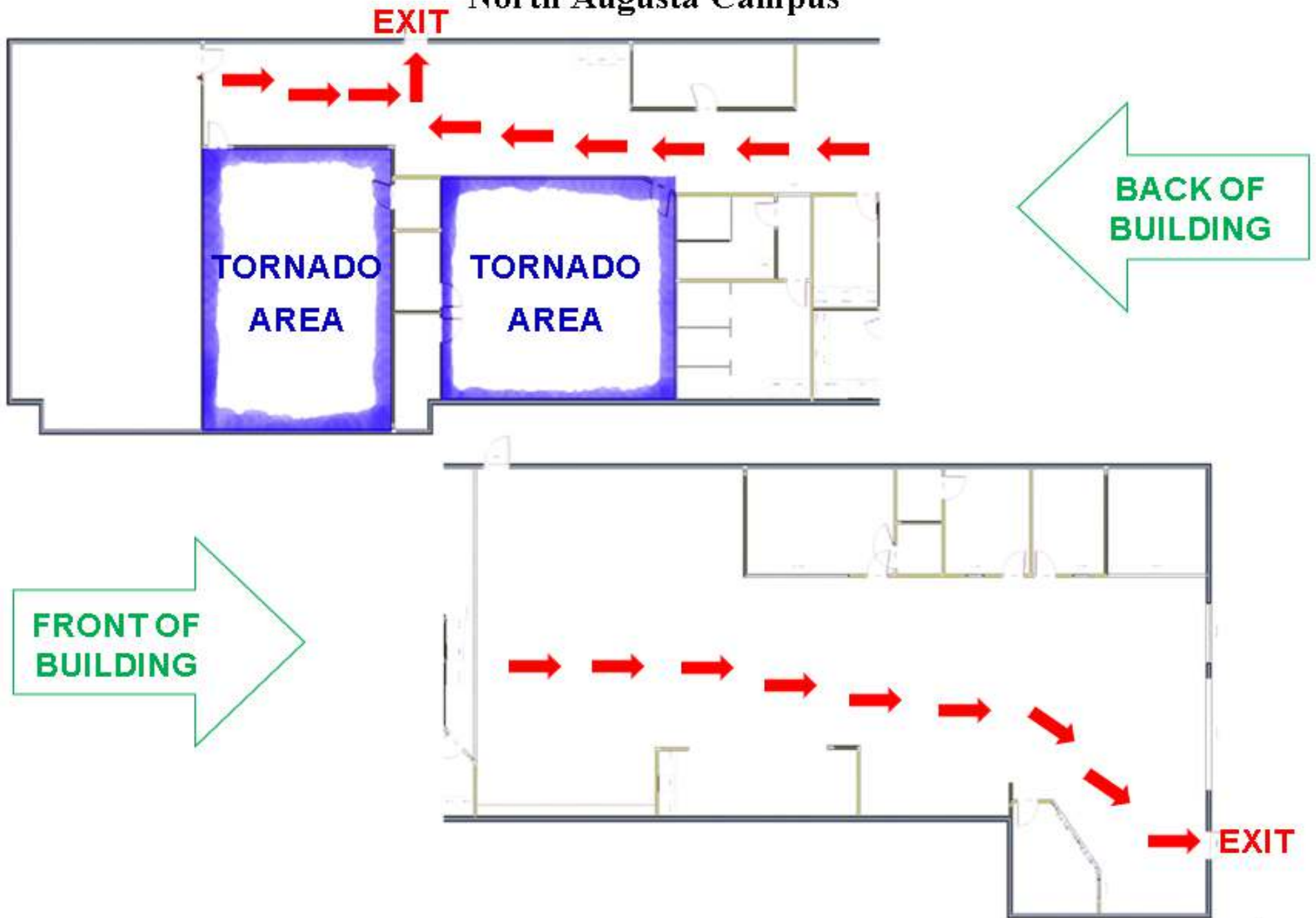
EVACUATION PLAN – **Spartanburg Campus**

Red Indicates Exits for Fire

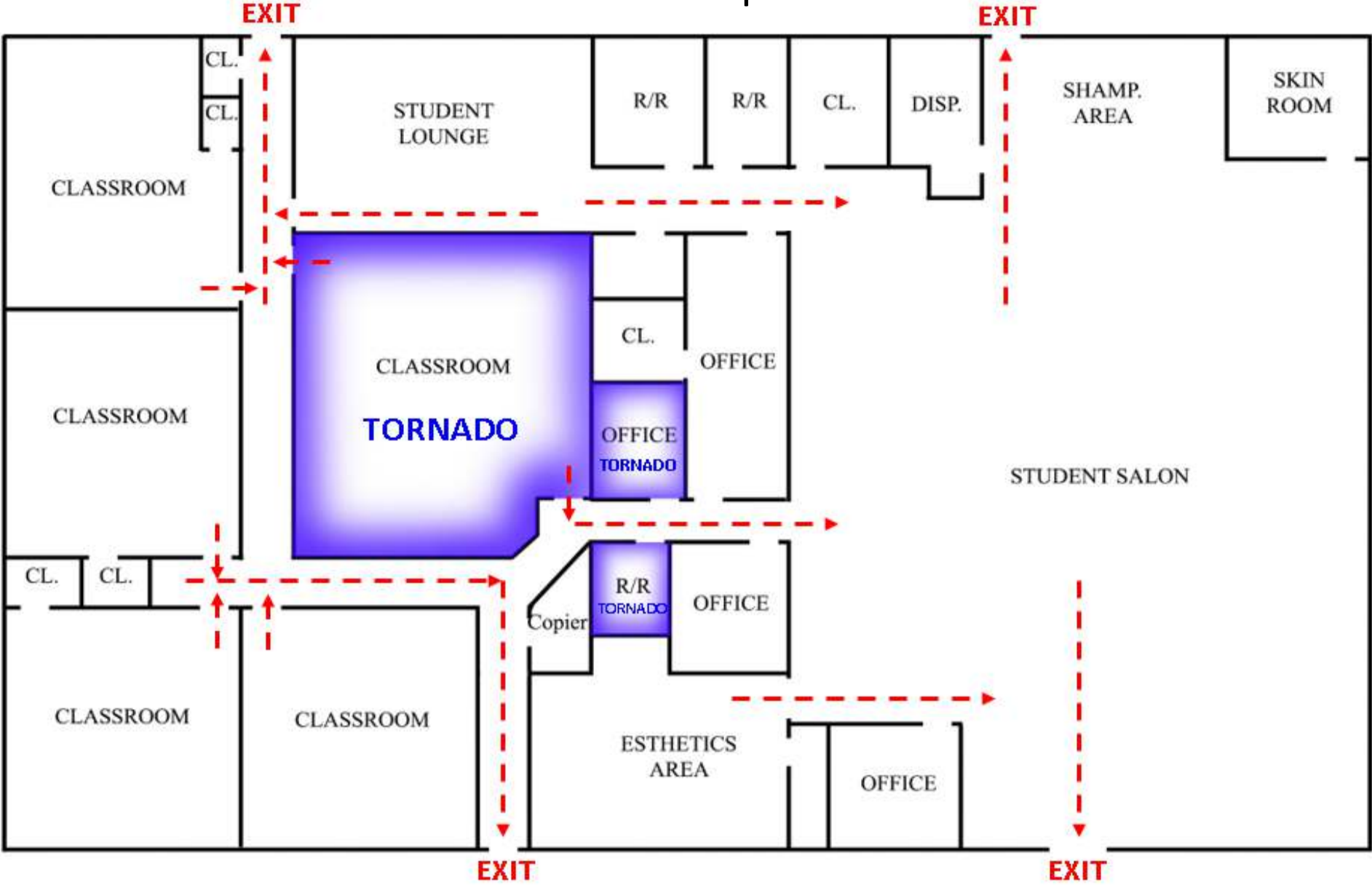
 Indicates Tornado Area



EVACUATION PLAN –
North Augusta Campus



EVACUATION PLAN – Florence Campus



Red Indicates Exits for **Fire**

Blue Indicates **Tornado** Area

EVACUATION PLAN – ROCK HILL CAMPUS

KEY

- - - - -> = Fire Route
- BLUE** = Tornado Area



EVACUATION PLAN –
Greenville Campus

Red Indicates Exits for **Fire**
Blue Indicates **Tornado** Area

