



Safety Information

- Refer to the Board of Cosmetology “Sanitary Rules and Regulations” posted in the school
- Safety and First Aid
 - Find the product ingredient information
 - Understand the ingredients
 - Refer to Material Safety Data Sheets (MSD Sheets) on what to do in an emergency.





Fire Safety

- In Event of fire:
 - Notify School Official of fire location
 - Call fire department when asked
 - Evacuate premises
 - Plan alternative exits
 - Service extinguishers



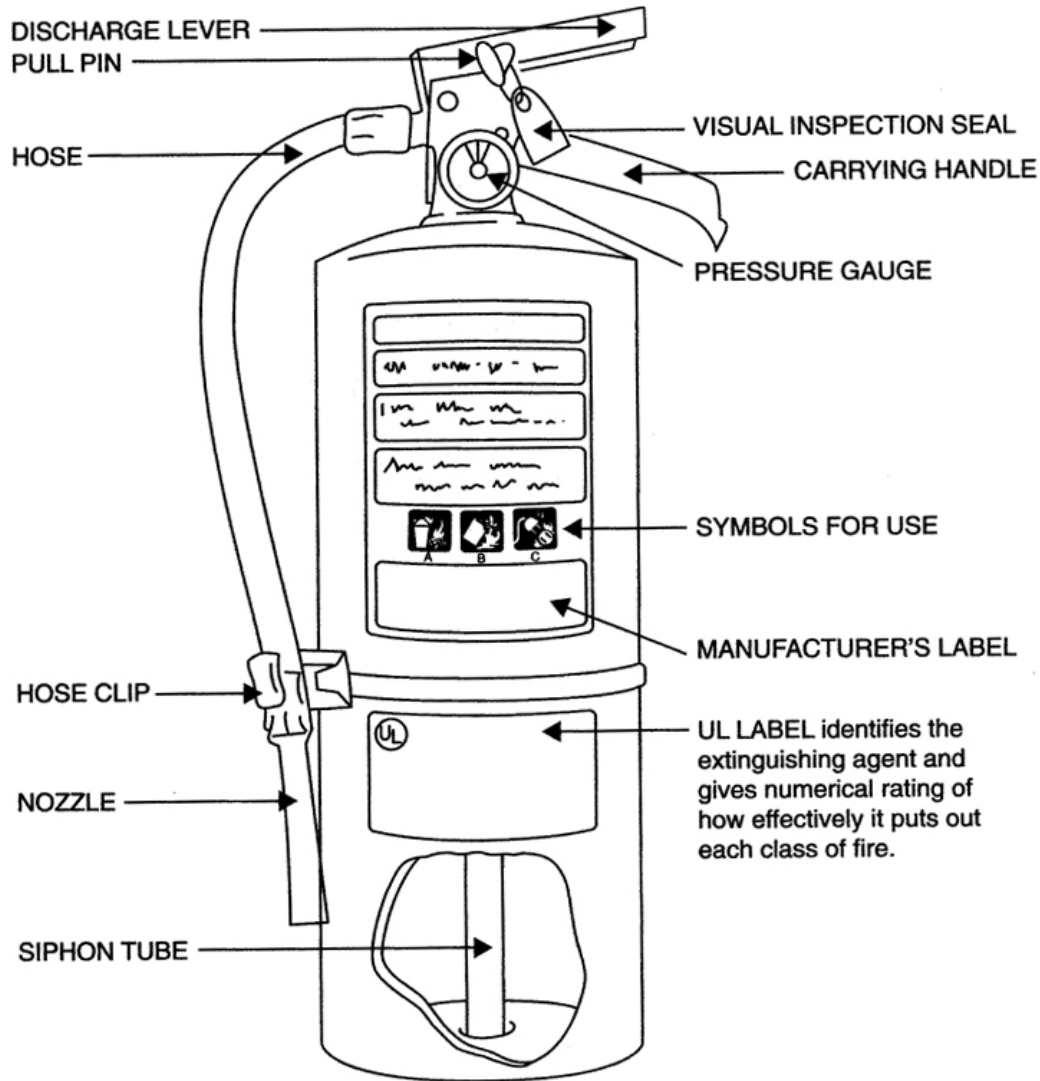


Fire Extinguisher Usage

- P – A – S – S
 - Pull the pin
 - Aim the nozzle
 - Squeeze the handle
 - Sweep from side to side



Operation of Fire Extinguishers



Fire & Tornado Drills

- Kenneth Shuler's Schools hold fire and tornado drills annually
- Check with your school's Director on proper evacuation routes and procedures





Earthquakes

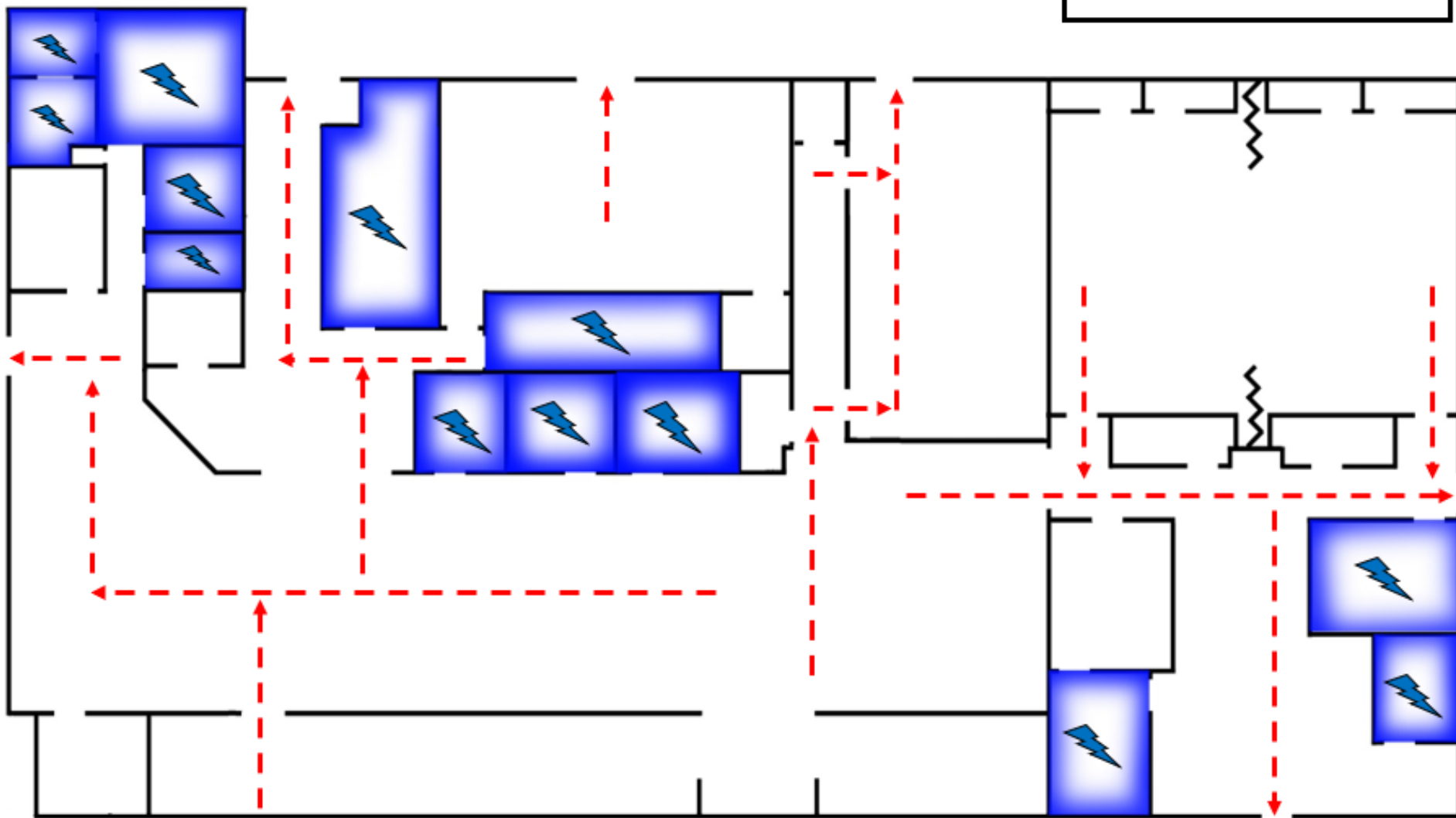
- DROP to the ground; take COVER by getting under a sturdy table or other piece of furniture; and HOLD ON until the shaking stops. If there isn't a table or desk near you, cover your face and head with your arms and crouch in an inside corner of the building.
- Stay away from glass, windows, and anything that could fall.
- Use a doorway for shelter only if it is close by to you and if you know it is a strongly supported.
- Stay inside until the shaking stops and it is safe to go outside. Most injuries occur when people inside buildings attempt to move to a different location inside the building or try to leave.
- Be aware that the electricity may go out or the sprinkler systems or fire alarms may turn on.



EVACUATION PLAN – St. ANDREWS CAMPUS

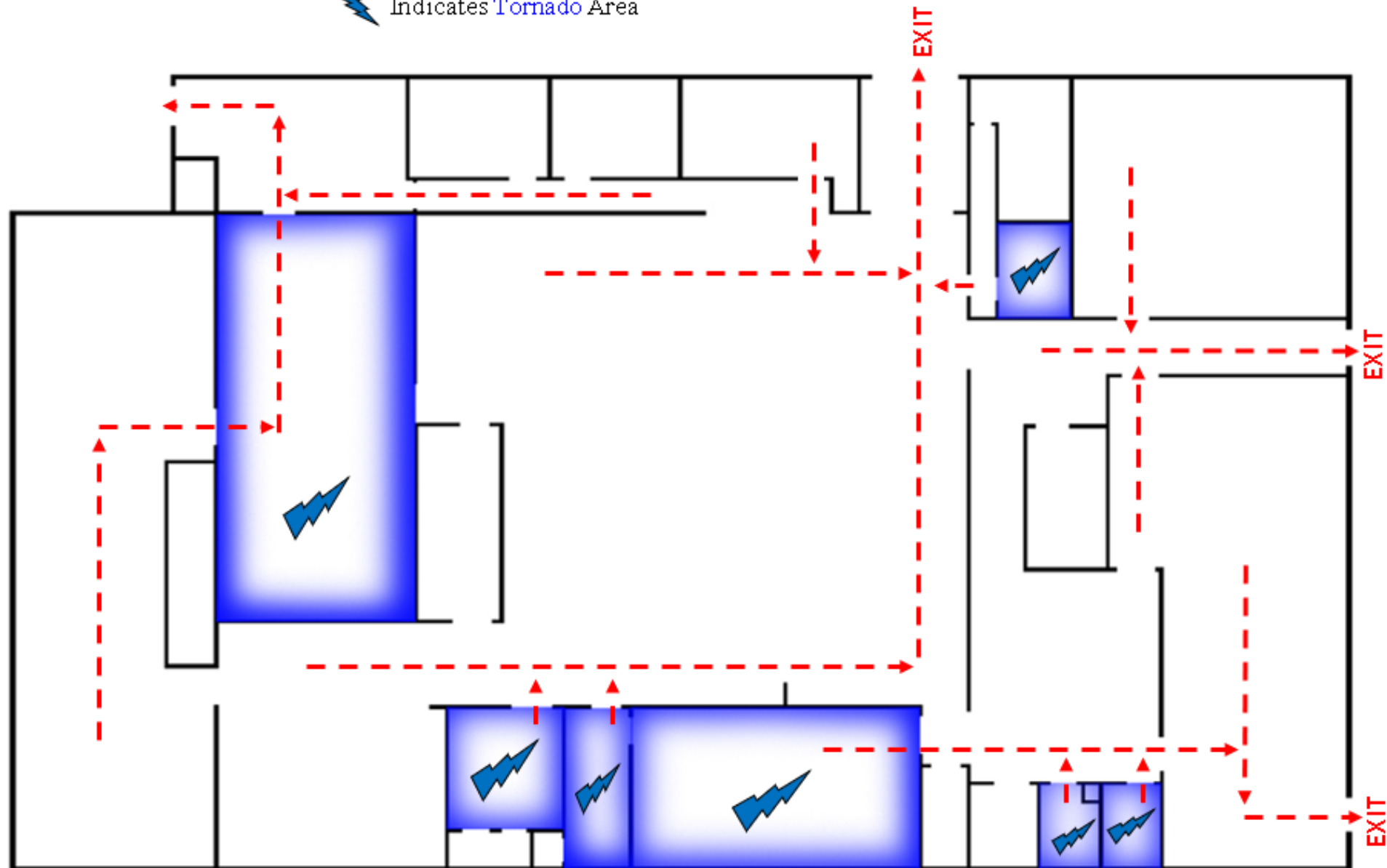
KEY

-  = Fire Route
-  = Tornado Area

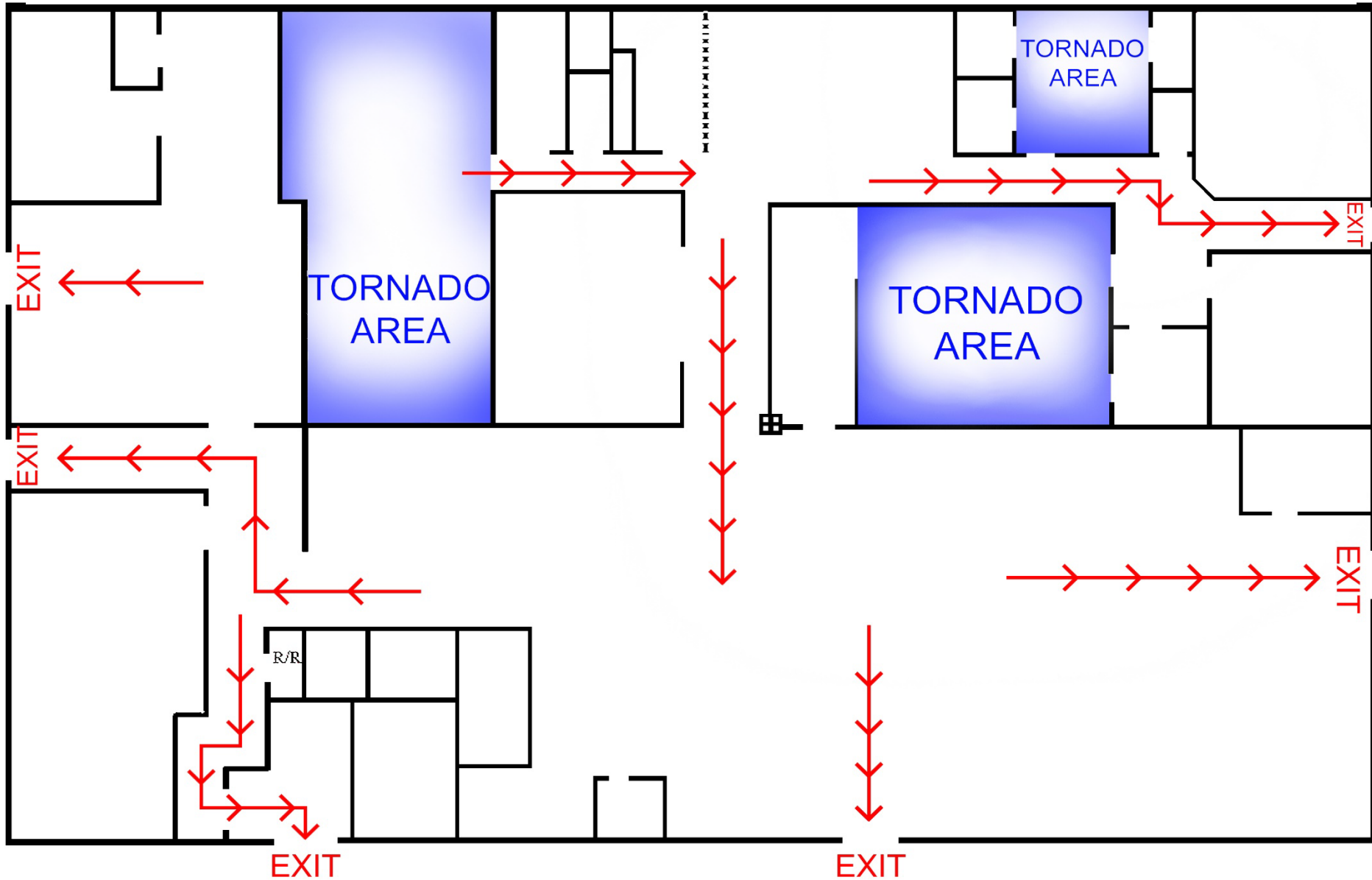


EVACUATION PLAN – **Spartanburg Campus**

Red Indicates Exits for **Fire**
⚡ Indicates **Tornado** Area



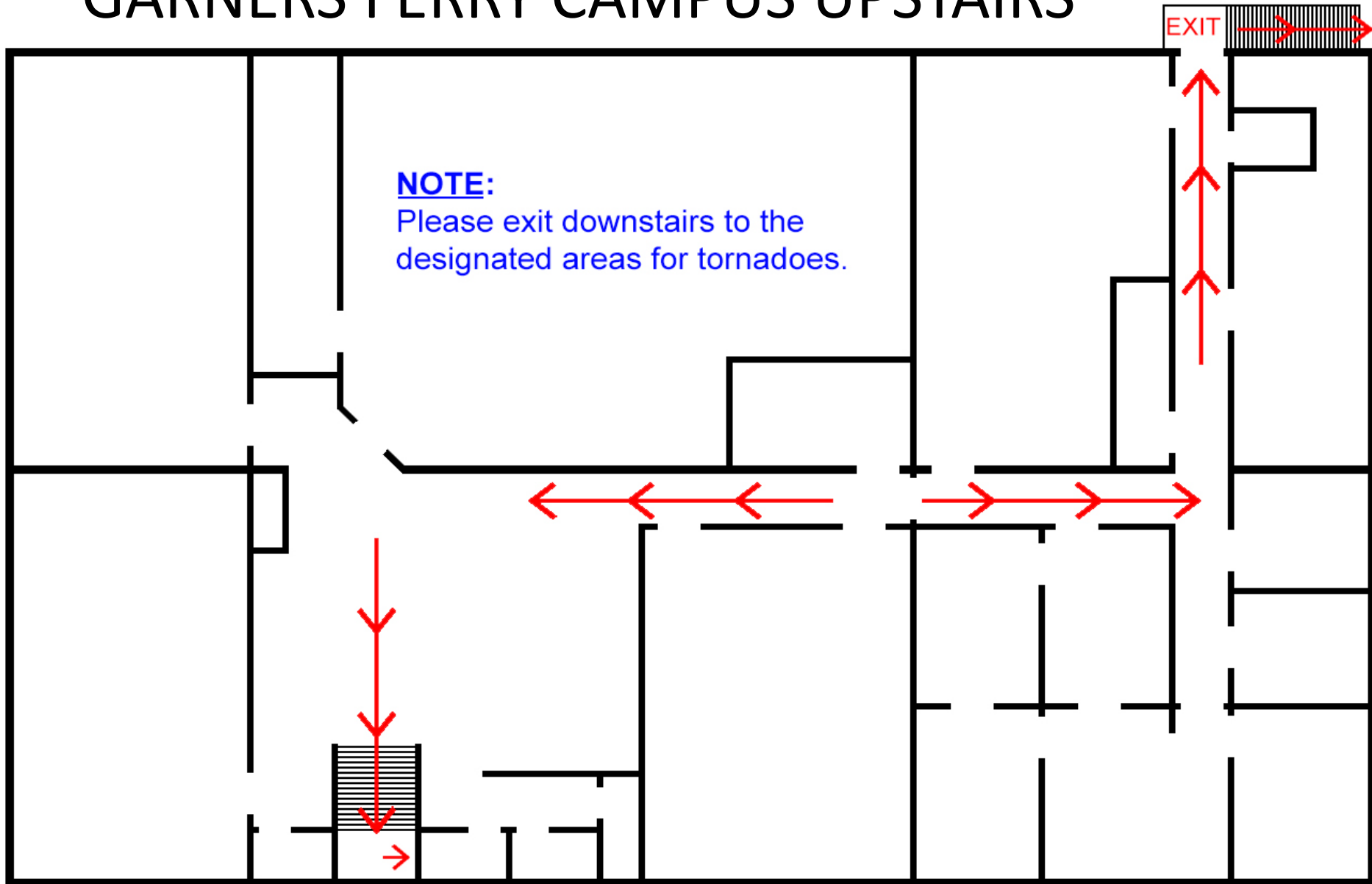
EVACUATION PLAN – GARNERS FERRY CAMPUS DOWNSTAIRS



EVACUATION PLAN – GARNERS FERRY CAMPUS UPSTAIRS

NOTE:

Please exit downstairs to the designated areas for tornadoes.



EXIT DOWNSTAIRS

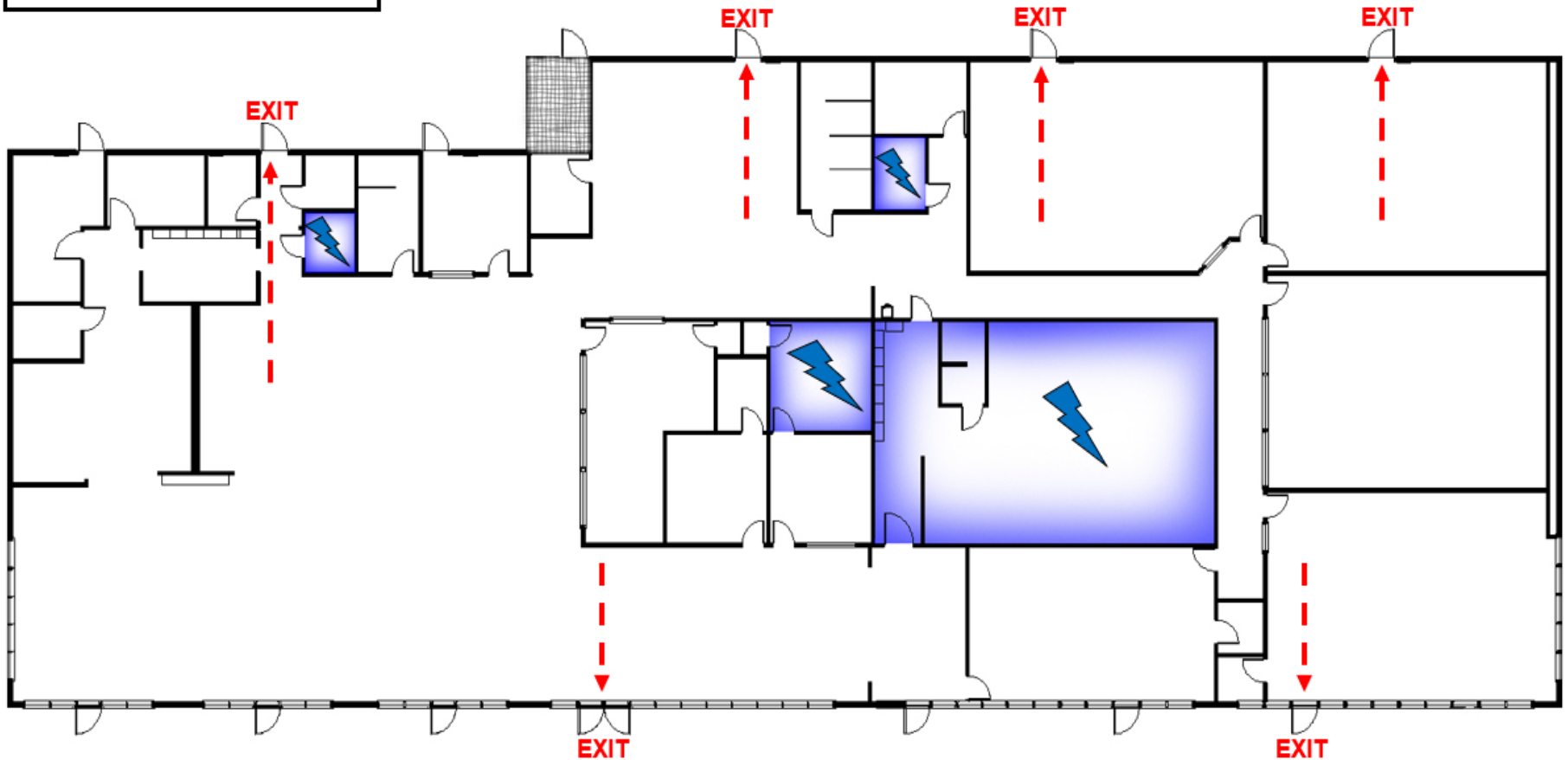
KEY

- - -> = Fire Route

⚡ = Tornado Area

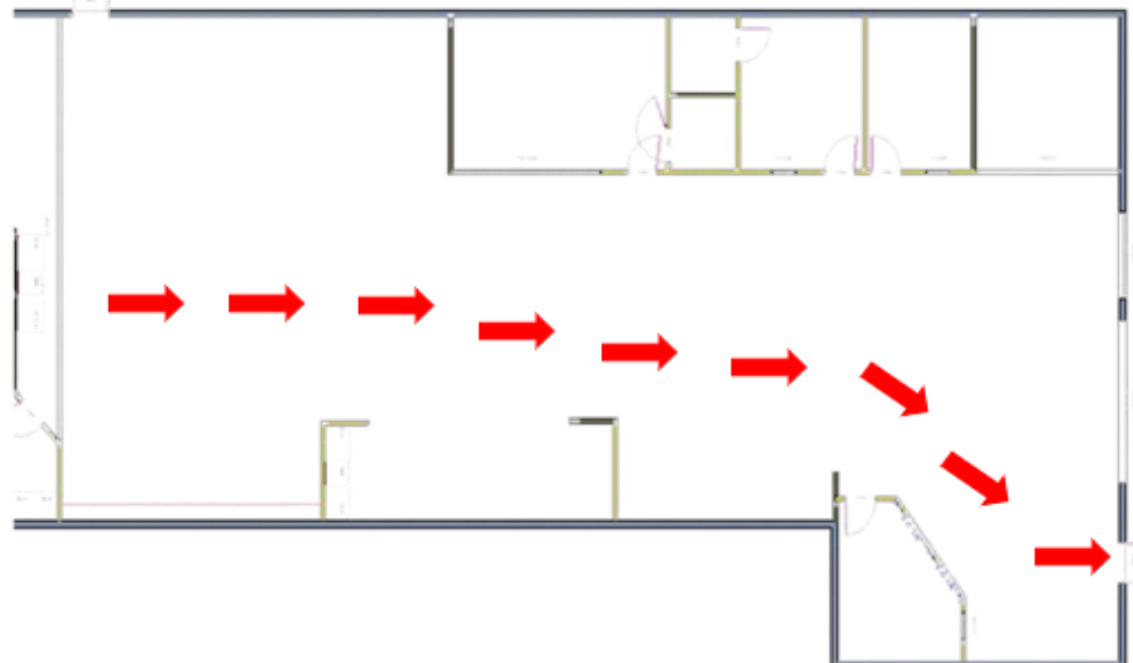
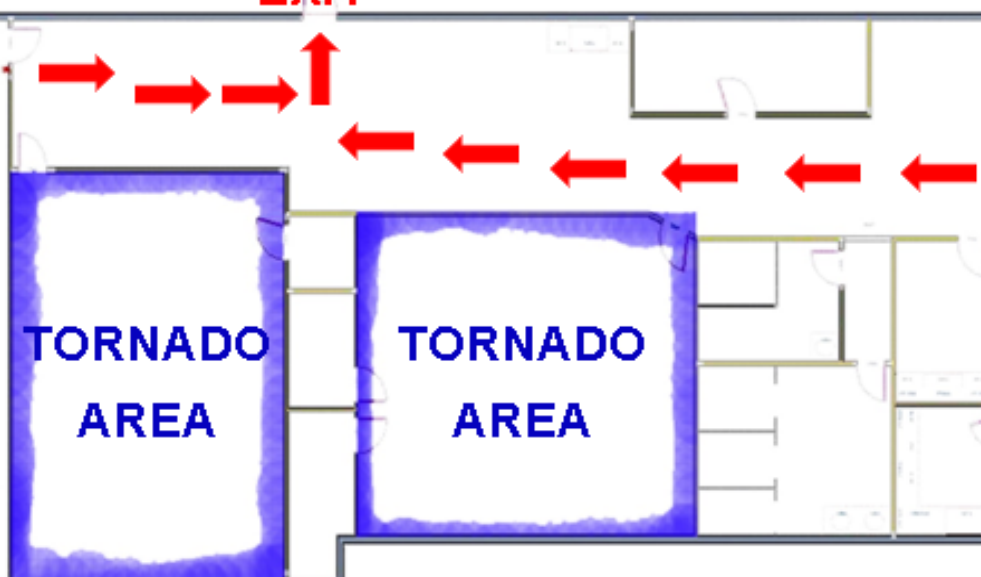
EVACUATION PLAN

Goose Creek Campus



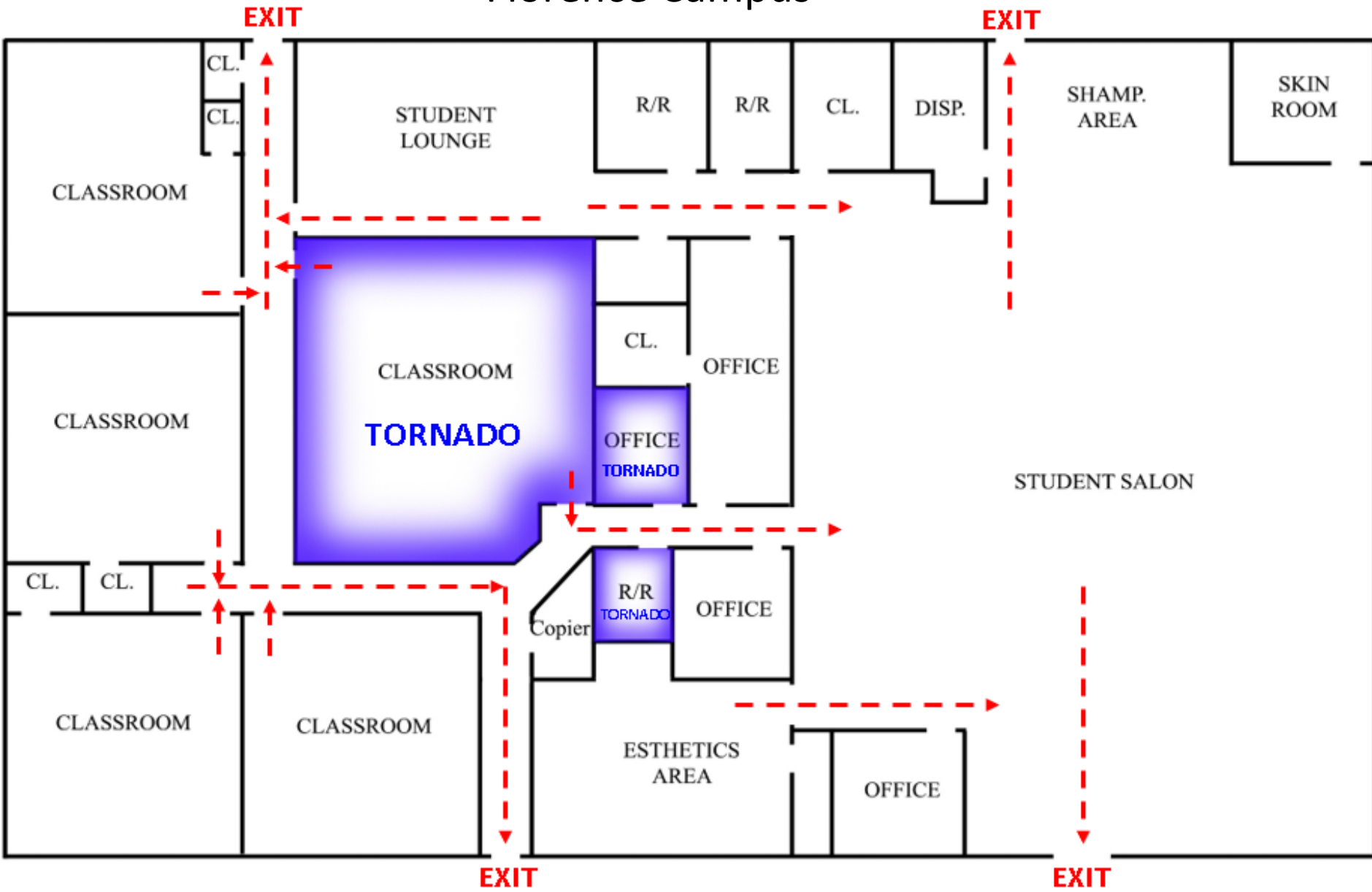
EVACUATION PLAN –
North Augusta Campus

EXIT



EXIT

EVACUATION PLAN – Florence Campus



Red Indicates Exits for **Fire**

Blue Indicates **Tornado** Area

EVACUATION PLAN – ROCK HILL CAMPUS

KEY

- - - > = Fire Route
- BLUE** = Tornado Area



**TORNADO AREA
IN BLUE**

GREENVILLE CAMPUS

EVACUATION PLAN

Red Indicates Exits for **Fire**
Blue Indicates **Tornado** Area

