

Safety Information

- Refer to the Board of Cosmetology “Sanitary Rules and Regulations” posted in the school
- Safety and First Aid
 - Find the product ingredient information
 - Understand the ingredients
 - Refer to Material Safety Data Sheets (MSD Sheets) on what to do in an emergency.



Fire Safety

- In Event of fire:
 - Notify School Official of fire location
 - Call fire department when asked
 - Evacuate premises
 - Plan alternative exits
 - Service extinguishers

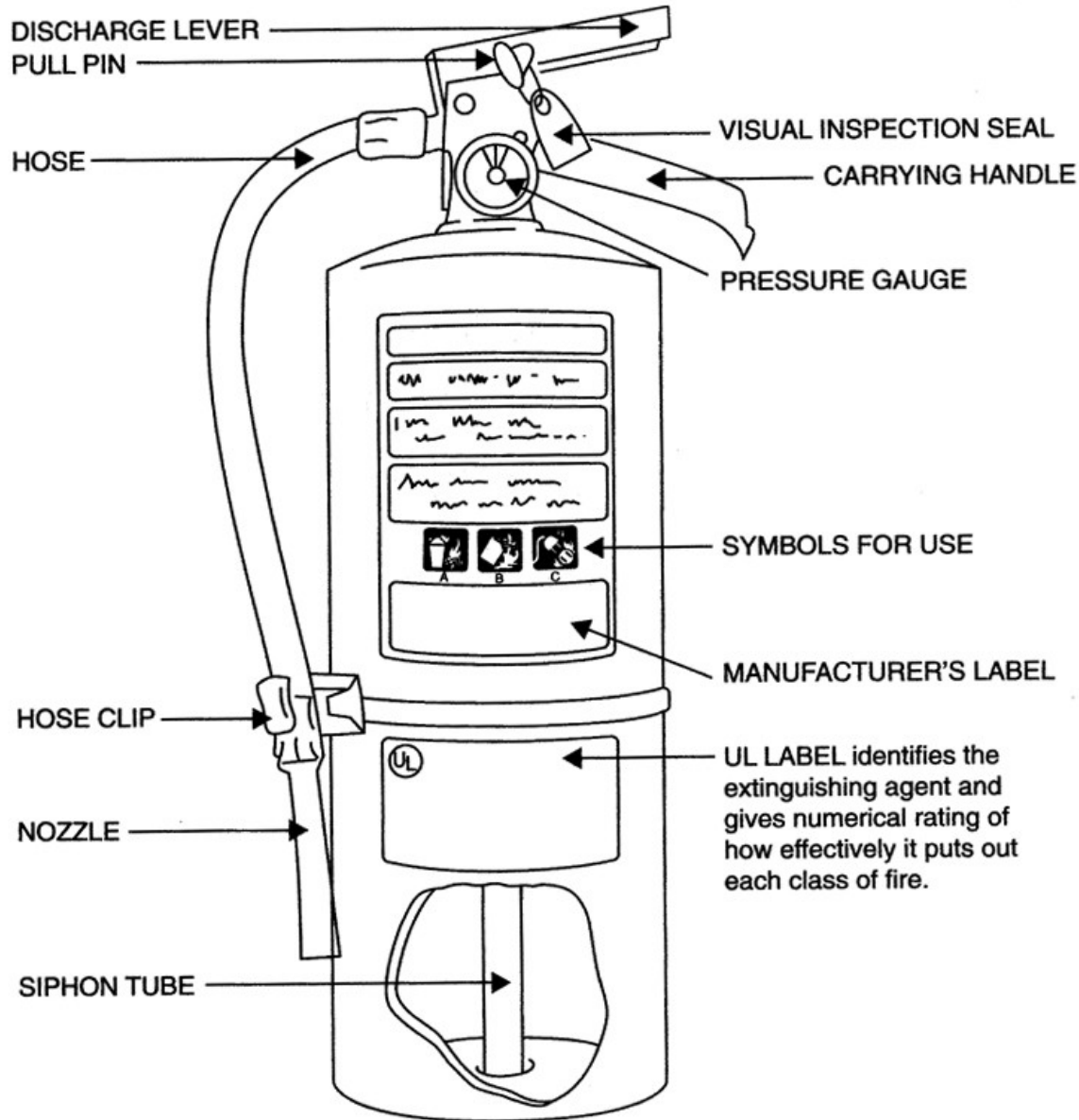


Fire Extinguisher Usage

- P – A – S – S
 - Pull the pin
 - Aim the nozzle
 - Squeeze the handle
 - Sweep from side to side



Operation of Fire Extinguishers



Fire & Tornado Drills

- Kenneth Shuler's Schools hold fire and tornado drills annually
- Check with your school's Director on proper evacuation routes and procedures

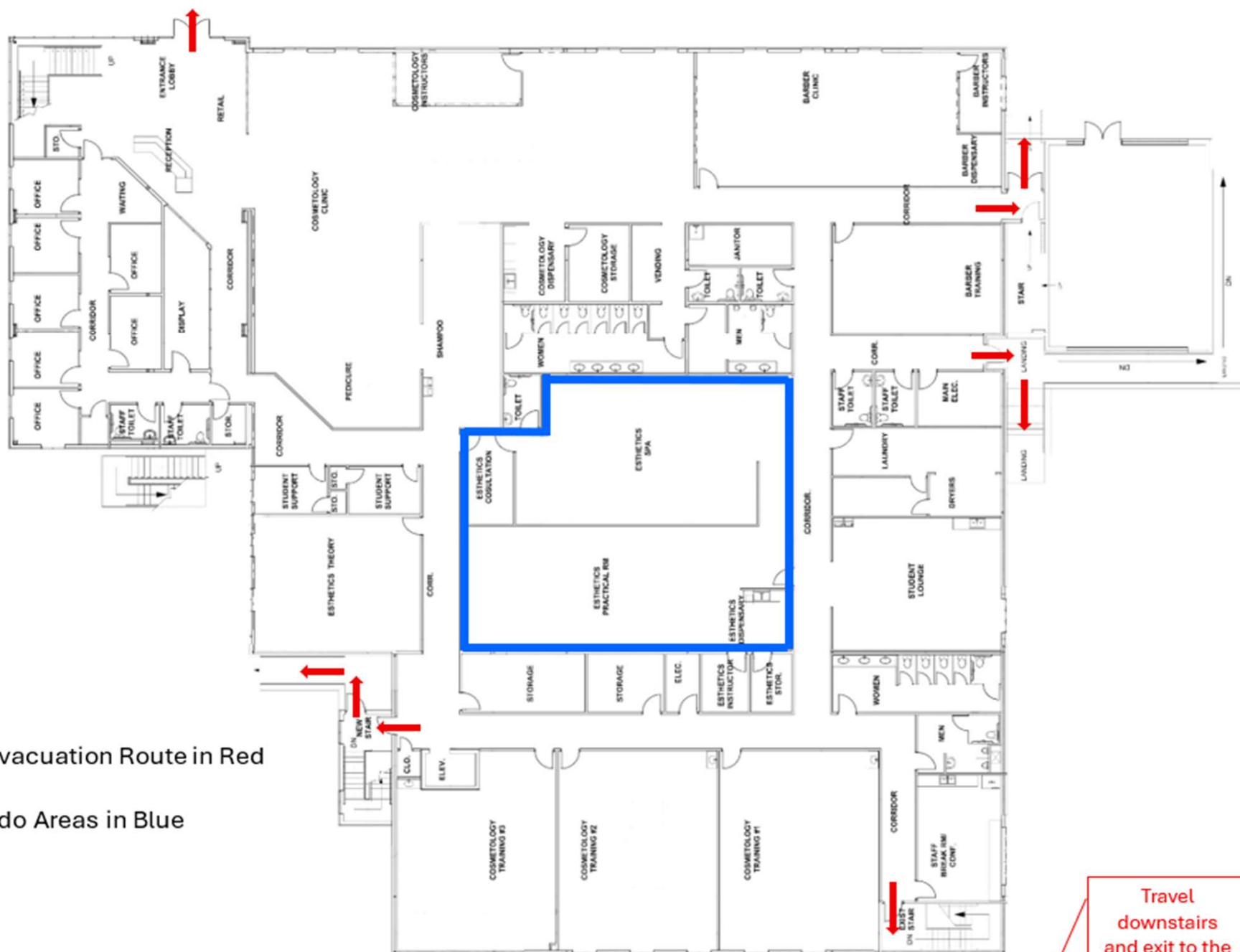


Earthquakes

- DROP to the ground; take COVER by getting under a sturdy table or other piece of furniture; and HOLD ON until the shaking stops. If there isn't a table or desk near you, cover your face and head with your arms and crouch in an inside corner of the building.
- Stay away from glass, windows, and anything that could fall.
- Use a doorway for shelter only if it is close by to you and if you know it is a strongly supported.
- Stay inside until the shaking stops and it is safe to go outside. Most injuries occur when people inside buildings attempt to move to a different location inside the building or try to leave.
- Be aware that the electricity may go out or the sprinkler systems or fire alarms may turn on.

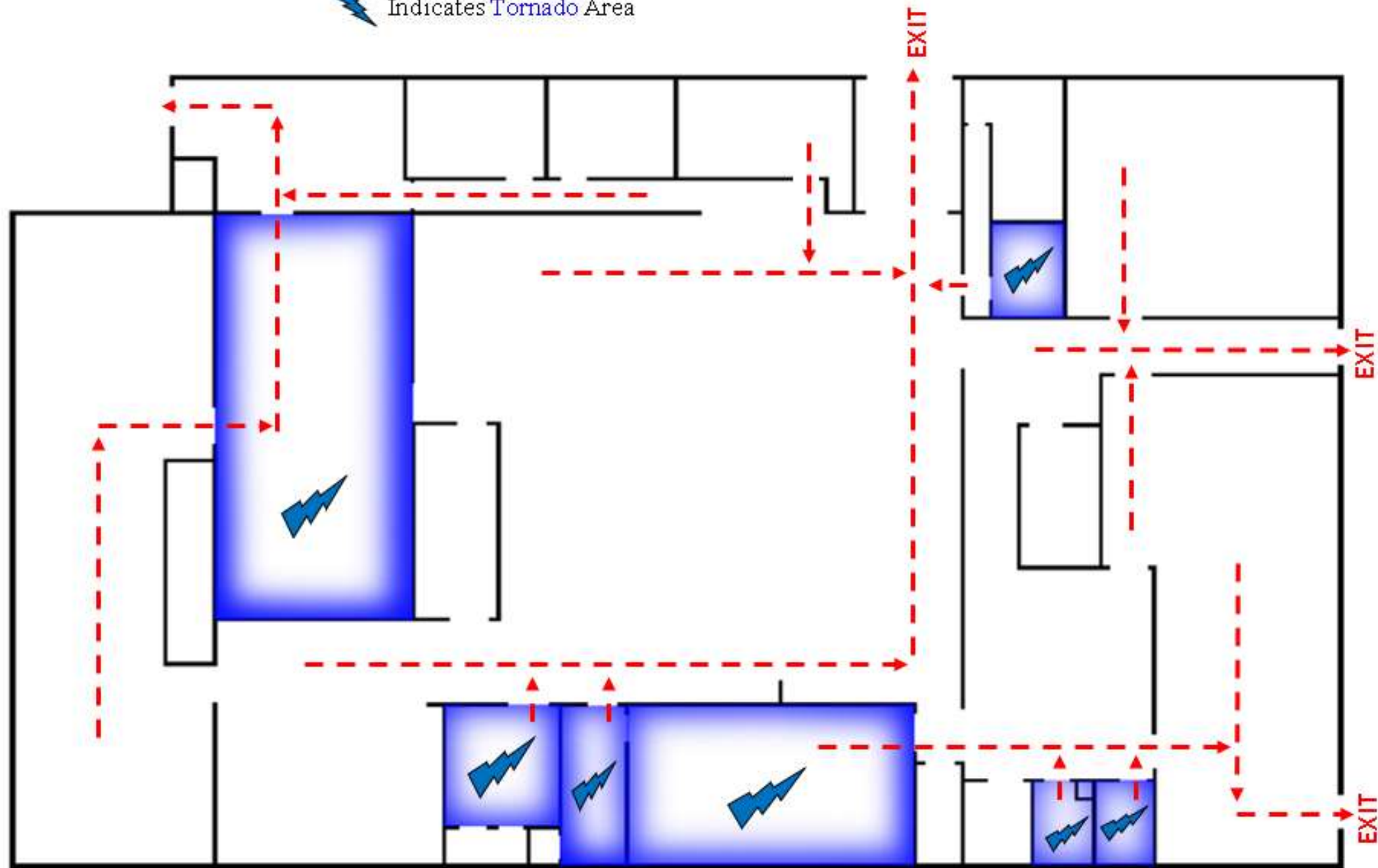


WeCo - FIRE EVACUATION AND TORNADO AREAS



EVACUATION PLAN – **Spartanburg Campus**

Red Indicates Exits for **Fire**
⚡ Indicates **Tornado** Area

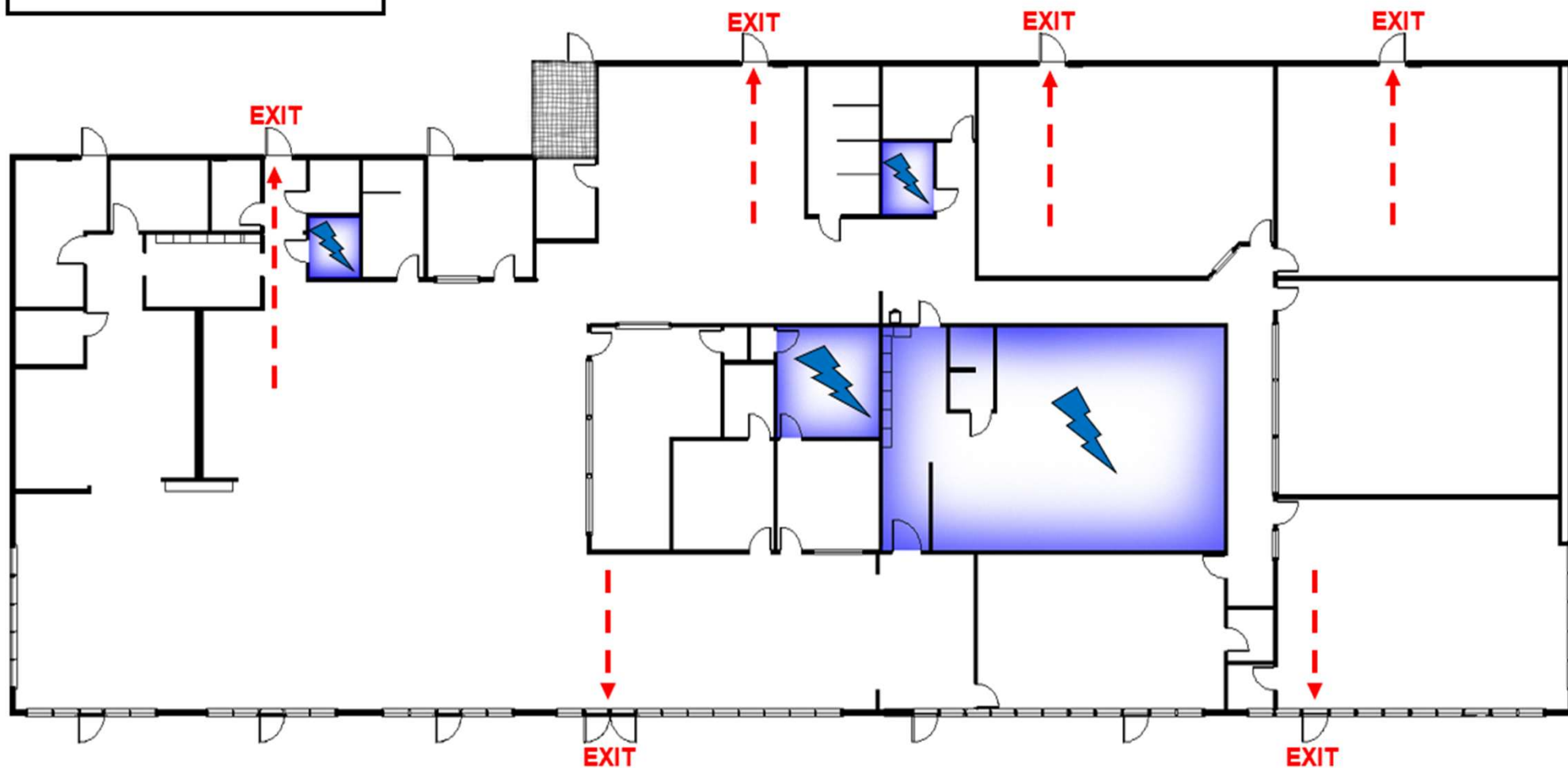


KEY

- - -> = Fire Route
- ⚡ = Tornado Area

EVACUATION PLAN

Goose Creek Campus



EVACUATION PLAN – North Augusta Campus

EXIT

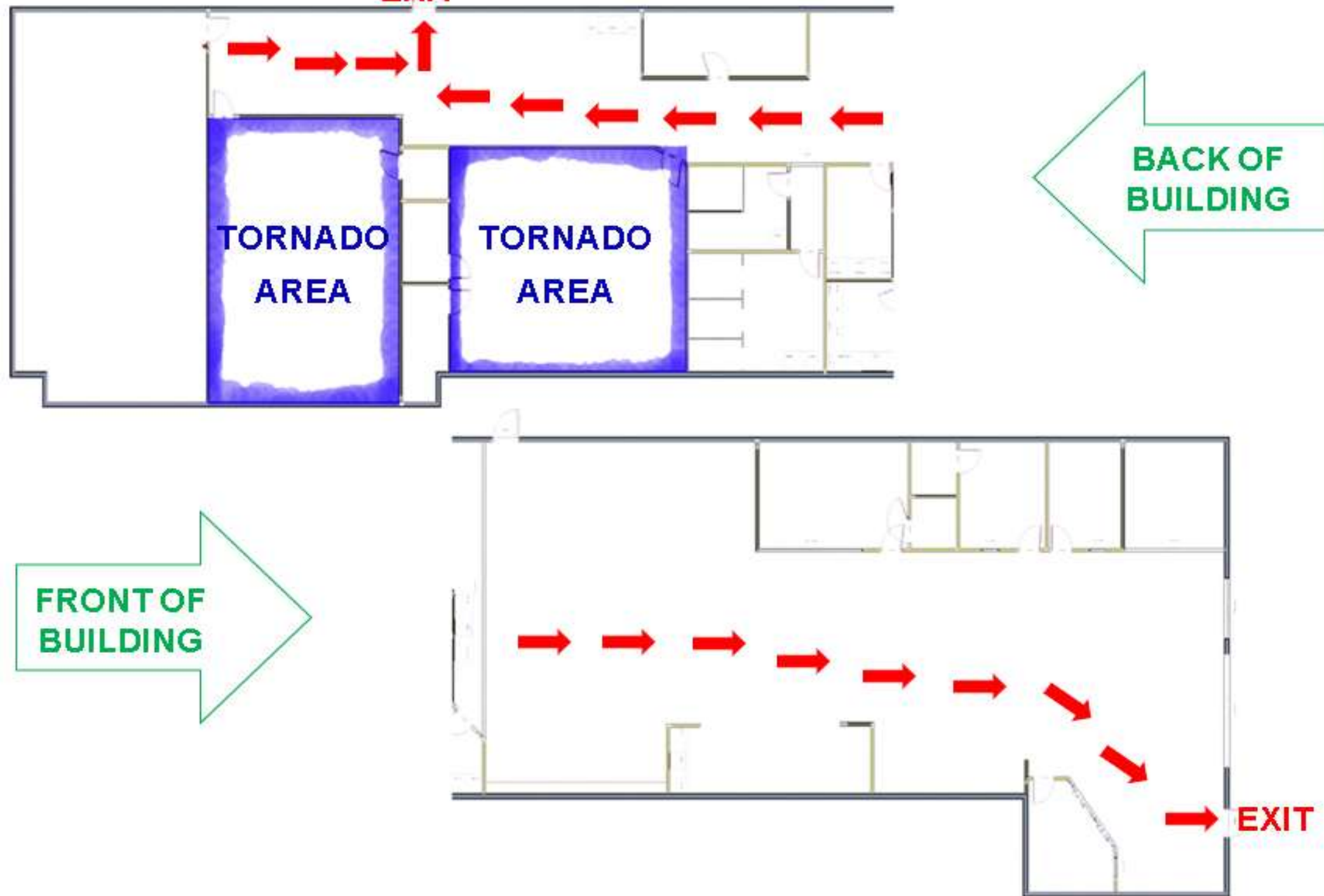
**TORNADO
AREA**

**TORNADO
AREA**

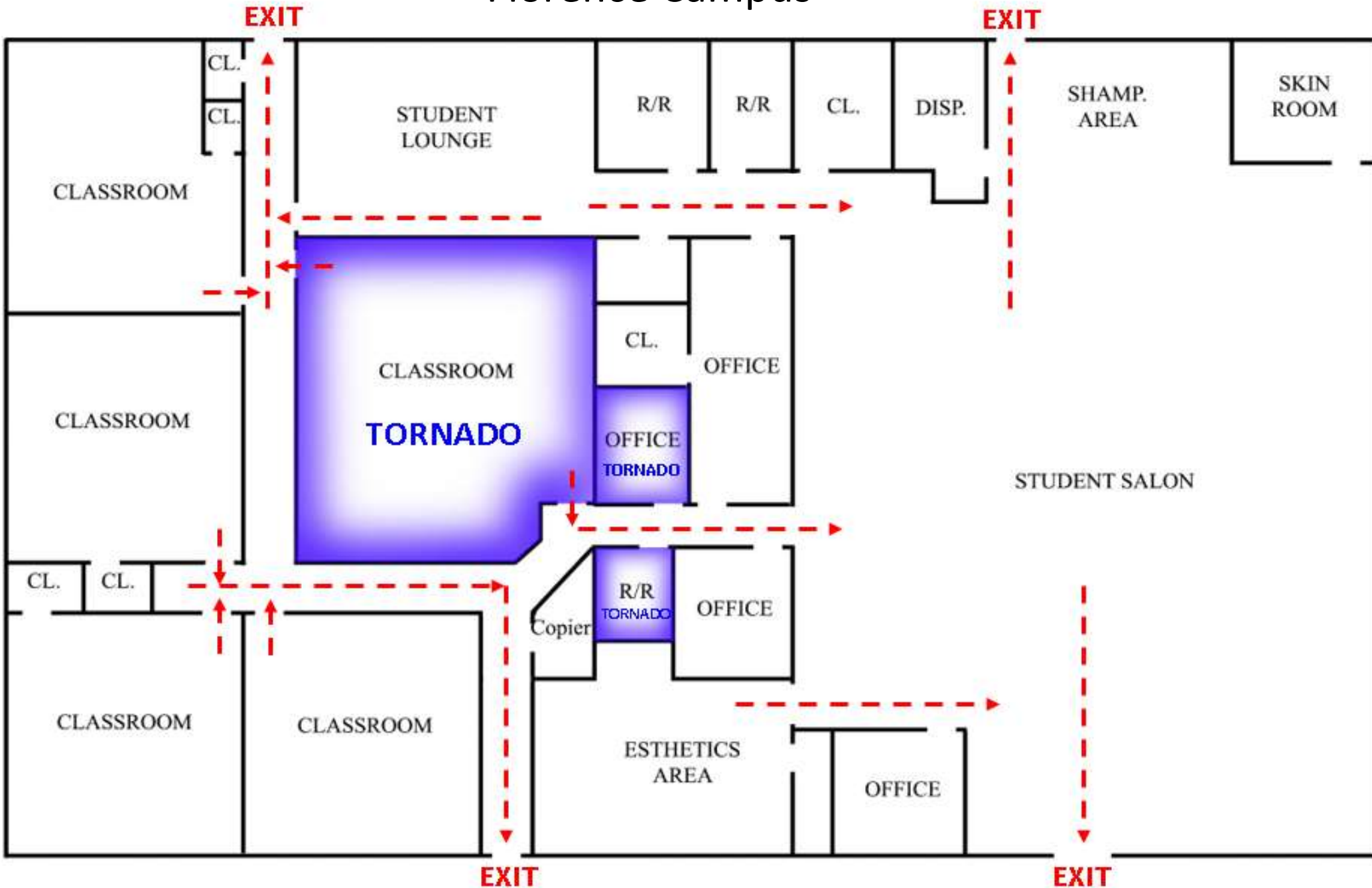
**BACK OF
BUILDING**

**FRONT OF
BUILDING**

EXIT



EVACUATION PLAN – Florence Campus



Red Indicates Exits for **Fire**

Blue Indicates **Tornado** Area

EVACUATION PLAN – ROCK HILL CAMPUS

KEY

--> = Fire Route

BLUE = Tornado Area

**TORNADO AREA
IN BLUE**



GREENVILLE CAMPUS - FIRE EVACUATION AND TORNADO AREAS



Fire Evacuation Route in Red



Tornado Areas in Blue

